

# HanDBase<sup>®</sup> for Android

Desktop and  
Conduit for Mac

Quick Start Guide



HanDBase<sup>®</sup> is a Registered Trademark of DDH Software, Inc. All information contained in this manual and all software applications mentioned in this manual are Copyright 1997-2010 DDH Software, Inc.



# Introduction

## What is HanDBase?

HanDBase is a mobile relational database application for handheld PDAs and Smartphones. The functionality of the application differs depending on the platform, but on all platforms it enables you to view and edit databases on your mobile device while you are on the go. You can also use optional desktop components to convert data from another format into HanDBase so you can bring your existing data with you.

HanDBase databases are often called applets, as they are more than just simple documents. In combination with the HanDBase application, many database designs create or replace fully functional programs.

## How Do I Contact DDH Software?

If you need to contact DDH Software, here's how:

### Web Page:

<http://www.ddhsoftware.com/>

### Email:

Sales: [sales@ddhsoftware.com](mailto:sales@ddhsoftware.com)

Support: [support@ddhsoftware.com](mailto:support@ddhsoftware.com)

### Mailing Address:

DDH Software, Inc  
13833 Wellington Tr Suite E4-425  
Wellington, FL 33414

## System Requirements

### Mobile Phone

Android device running OS 1.6 or higher

1 MB of available memory for the HanDBase application, storage card for databases

### Desktop Machine

Intel-based Apple Mac OSX version 10.5 or higher. To access the databases stored on your Android device, you will need a USB cable or a memory card slot that can read the memory card of your Android device.

## Getting Started

This Quick Start Guide for HanDBase for Android Desktop and Conduits will help you discover the basics of using the desktop components with HanDBase on your Android. It discusses the basic installation and functionality of HanDBase Desktop and the HanDBase Android Sync Conduits.

### Installing HanDBase to your Android Device

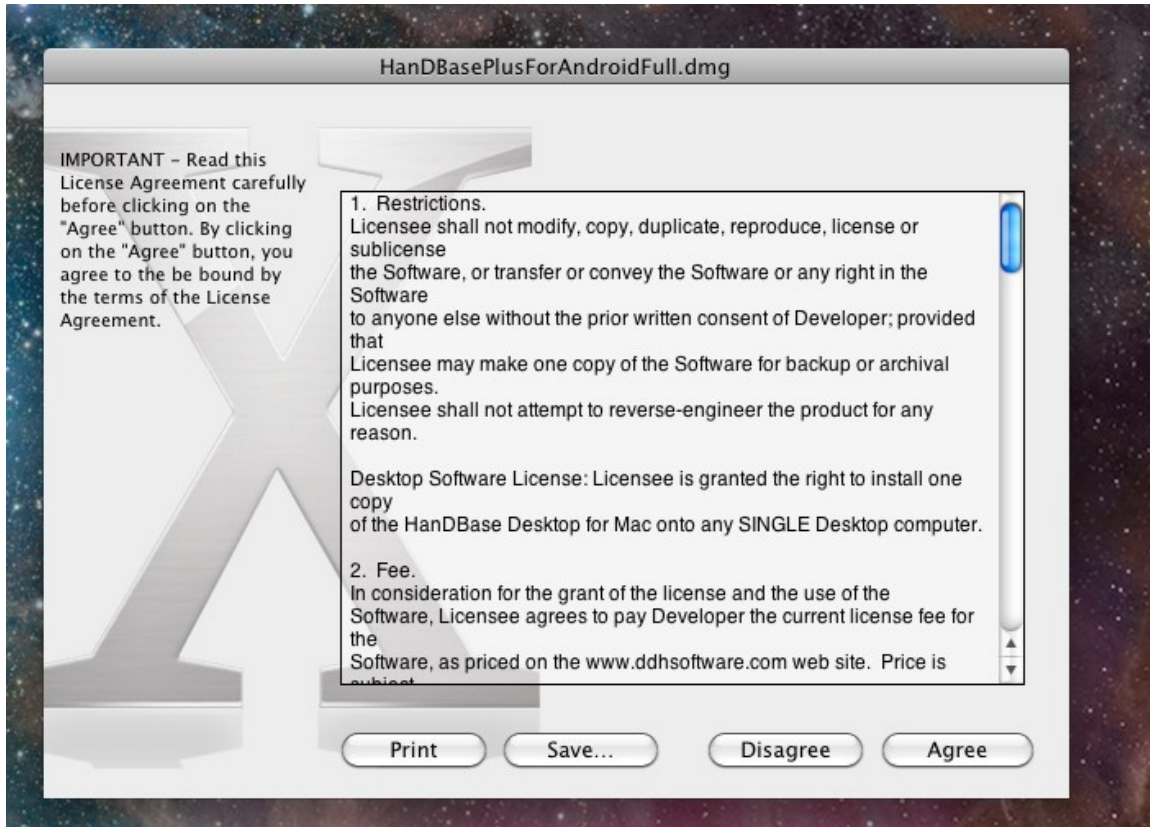
HanDBase for Android is sold separately and exclusively via Google Play. Thus, you will need to purchase this solution separately. A link to the product on the Google Play is available on our website: <http://www.ddhsoftware.com/Android>

There is a separate set of documentation that explains how to install and use the Android application, please see the documentation on our site for the complete manual:

<http://www.ddhsoftware.com/knowledgebase.html?read=95>

## Installation of Desktop Components

The Desktop components are bundled into a single Disk Image (DMG) file. To launch this file, double click it and it will automatically mount and launch the installer.



You will have the option to read through the license agreement. Please make sure to read through this and if you accept, click "Agree" to continue with the installation.

After a few moments, you will be shown the following screen:



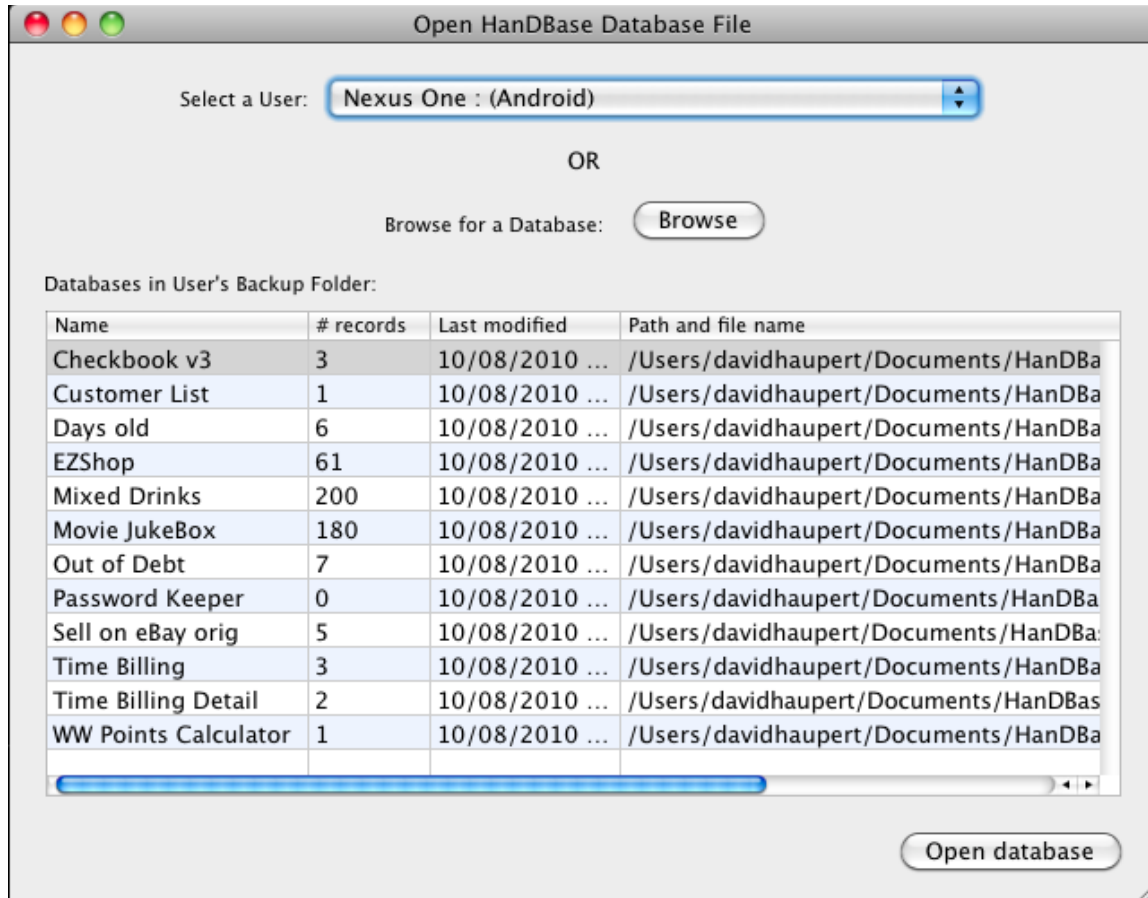
To complete the install, simply drag the HandDBase icon to the folder on the right. This is actually copying the HandDBase program into your Applications folder. In the future, whenever you go to the Finder and select Applications, you should see the HandDBase Desktop 4 icon listed there, ready to launch. Double click this file to launch it.

If installing the registered version, you will likely be prompted for your license key. Enter it as you see it on the order confirmation or the DDH Software web site and press OK.

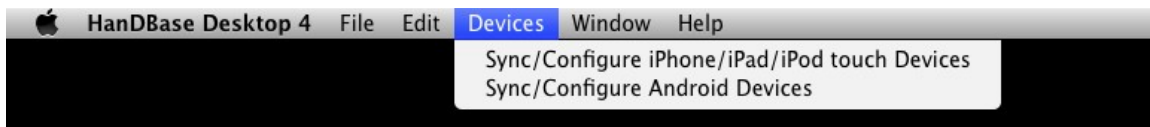
This is a very important step as now the HandDBase Desktop Components have been installed, but you still need to do several things to synchronize with your Android device.

# Creating a Partnership between HanDBase Desktop and your Android device

To create a partnership, go to Finder, choose Applications and select HanDBase Desktop 4, which is located under the HanDBase sub-folder.

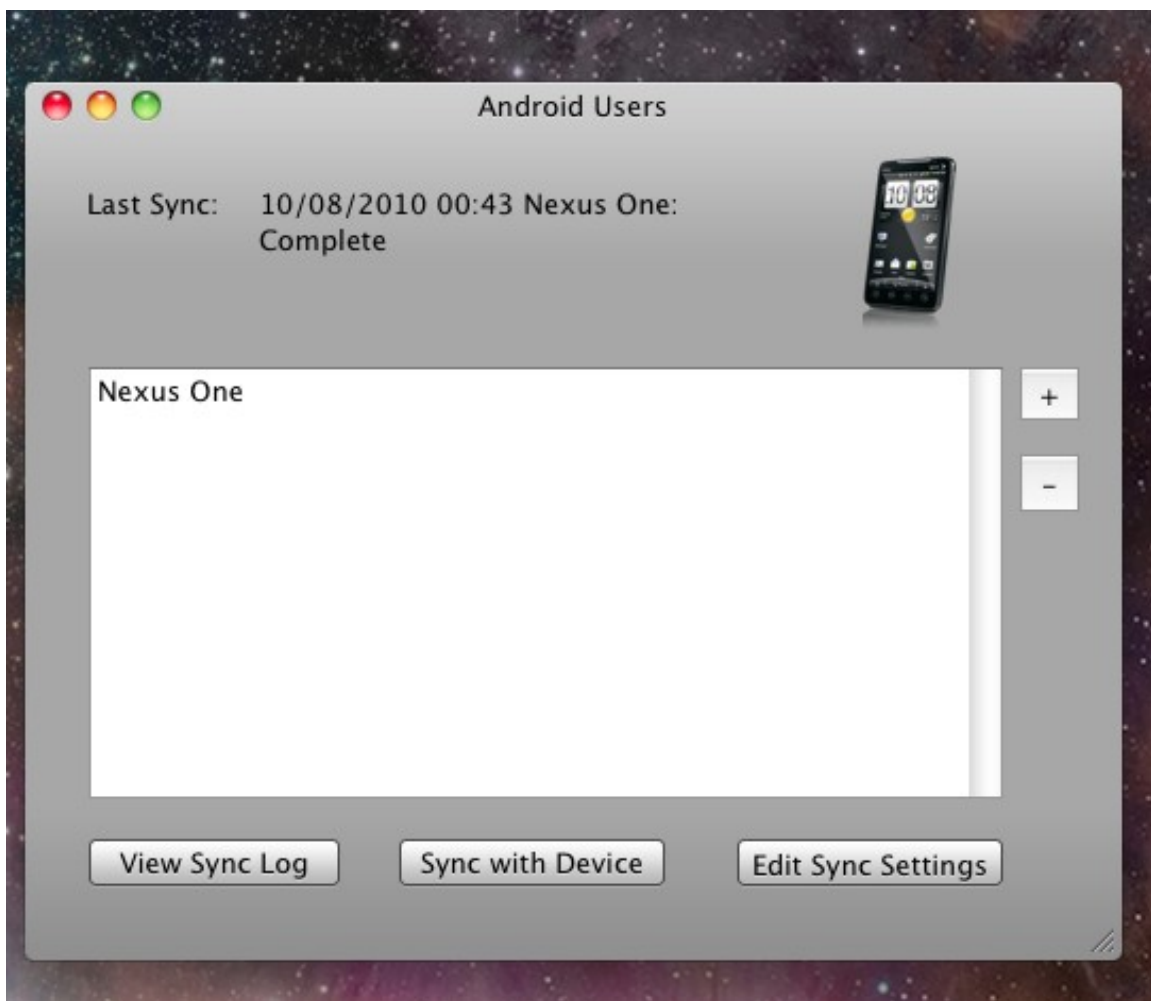


Choose the Devices menu option at the top and select Sync/Configure Android Devices





Here you will see a list of Android User partnerships currently created on your desktop. This list may be blank the first time you run it. To create a partnership, select the + icon to Setup a new Android User:



You will be asked to follow a series of simple steps. The first step gives you the option of connecting either via a USB port connection or over Wifi:



If you have an Android device running an OS before Android 3.0, the USB option via cable is supported. When Android 3.0 was released, many devices stopped supporting USB Drive Mode – that is, the mode that allows the drive of the Android device to be mounted as a drive letter on your Mac. If your device does not support this drive mode, you will either need to select the Wifi Option or Connect the memory card of your device to the Mac directly by removing it from the device and using a card reader.

The Wi-Fi option makes it possible for a sync without a cable. The Android device and your Mac must both be on the same WiFi network for this to function.

Select the connection option you prefer and click Continue:

If you select the WiFi sync mode, the next screen you'll see is the following:



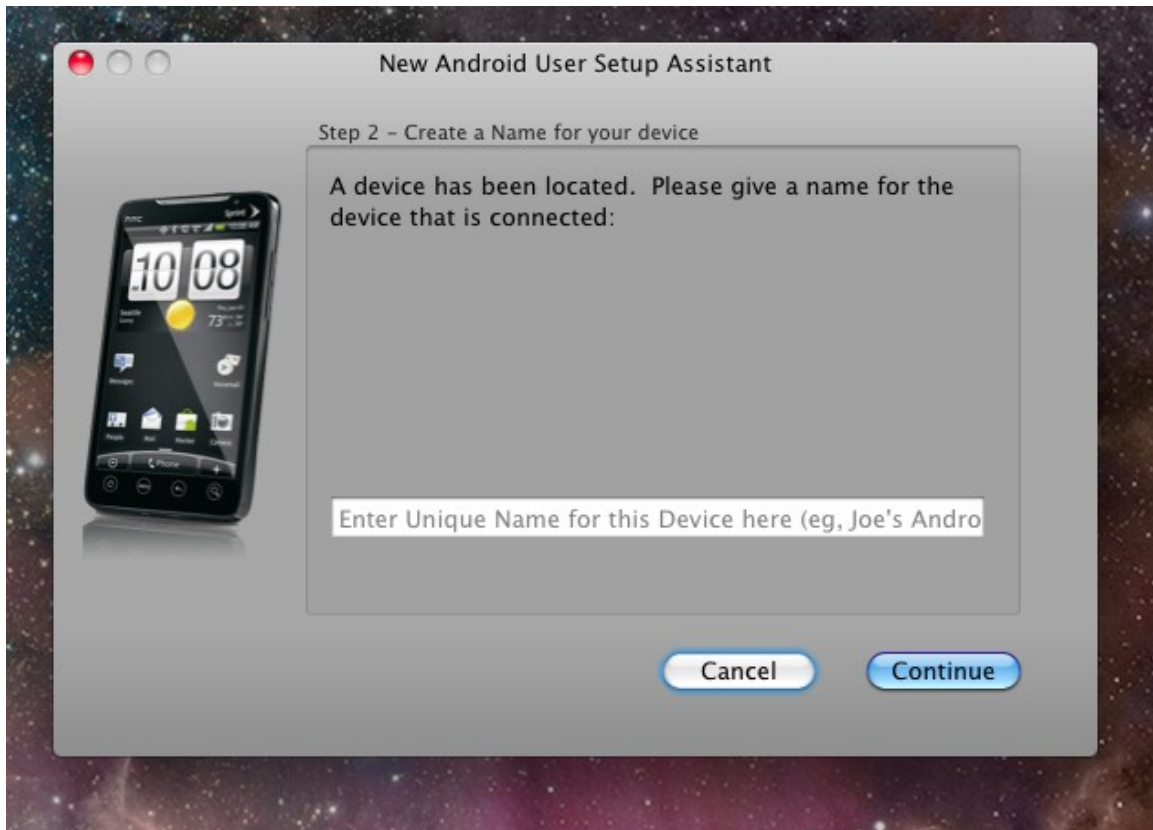
Follow the instructions to launch Desktop Connect mode from HanDBase on your device, and then enter the address given by the device in the box shown. Select Continue.

If however, you selected the USB Connection option in the previous screen, you will be given the following connect screen instead:



Set up your device as indicated and hit Continue.

The next step involves typing in a name for your device. This could be your name, the name of your Android model, or whatever you'd like. However, it must be a unique name as this is going to be used to uniquely identify this device's partnership and databases within the program. Enter your device name and click Continue.

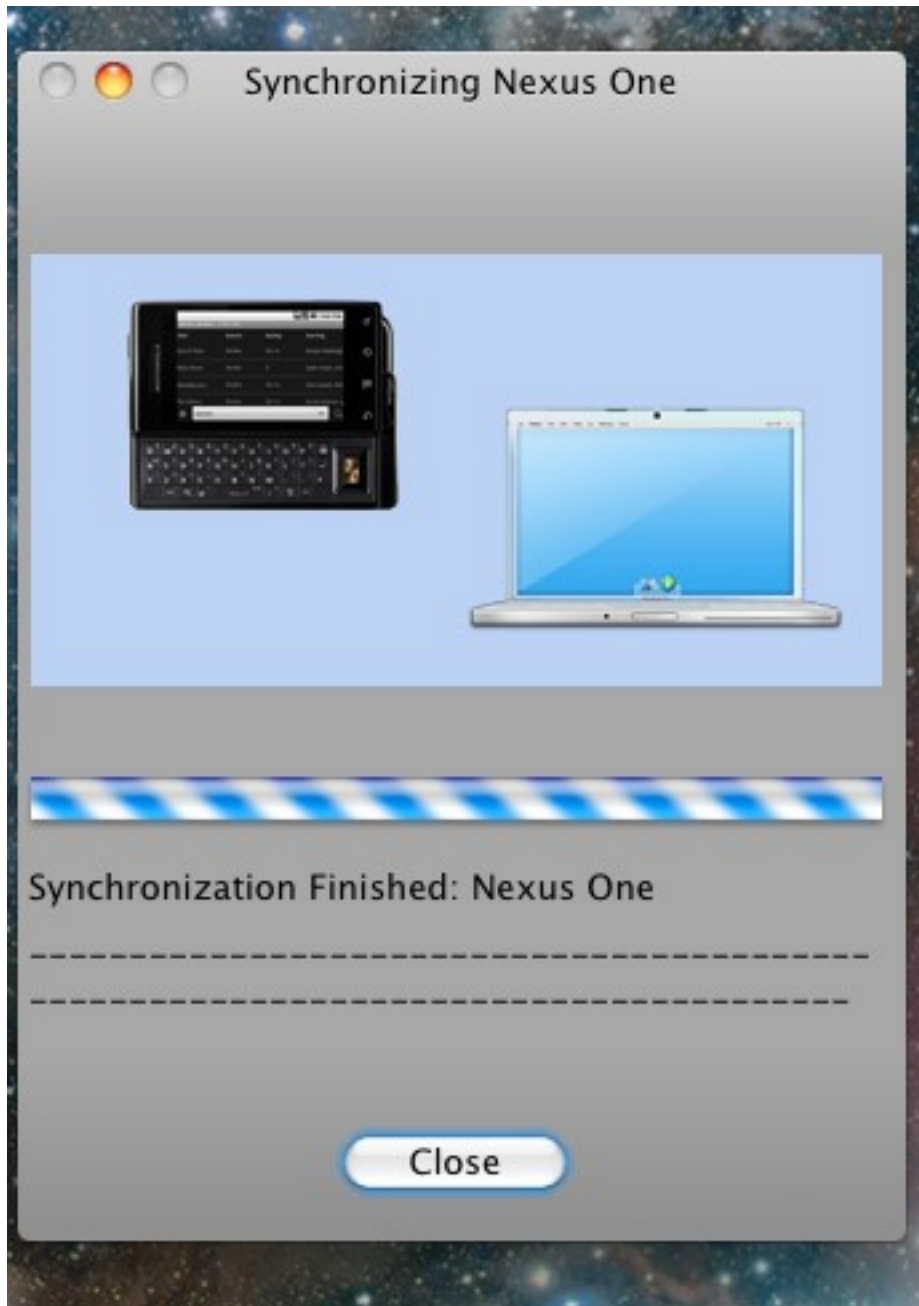




If the program is successful in communicating with your device, you will receive the following confirmation. Make sure to click Continue.



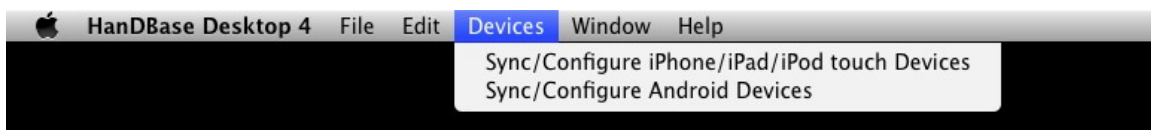
Now the initial synchronization will begin. This may take a few seconds as it copies the sample databases from your Android device to the desktop:





Assuming all is successful, you'll receive a confirmation that the partnership has been created. At this point, your configuration is complete and you're now able to begin using HanDBase on your Android phone or access the databases from the desktop.

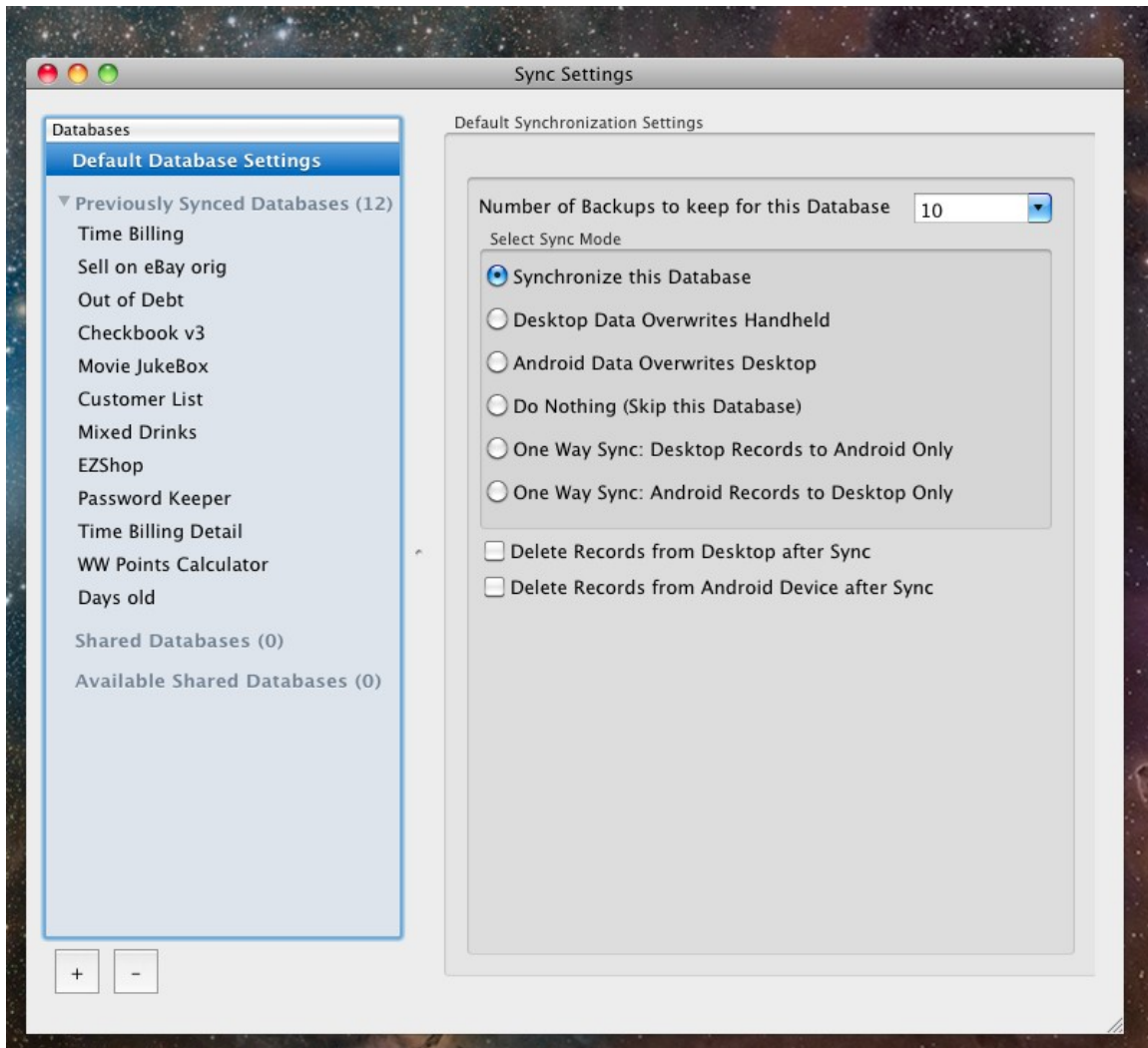
Please note: in the future, you can manage your Android syncing and your user partnerships via the HanDBase Desktop:



Simply click Devices and then Sync/Configure Android Devices from the menu.

## HandBase Android Synchronization Settings

Back on the desktop, the option to configure Android users also gives a button to edit the sync settings for that user. To do this, select a user in the list, and then choose Edit Sync Settings. You will be shown a screen like this:



On this screen you will be able to change the default settings for syncing any database. Along the left are four categories of entries:

The entry labeled Default Database Settings is where you determine the default settings for synchronization. This is how any new database that is being synced will behave as well as any that have the 'Use Default Settings for this Database' option checked. Each database, after being synced the first time, will be given the option to override the default settings. When doing so, the options are:

Number of Backups to keep of this Database- Each time you sync, a backup of the current files

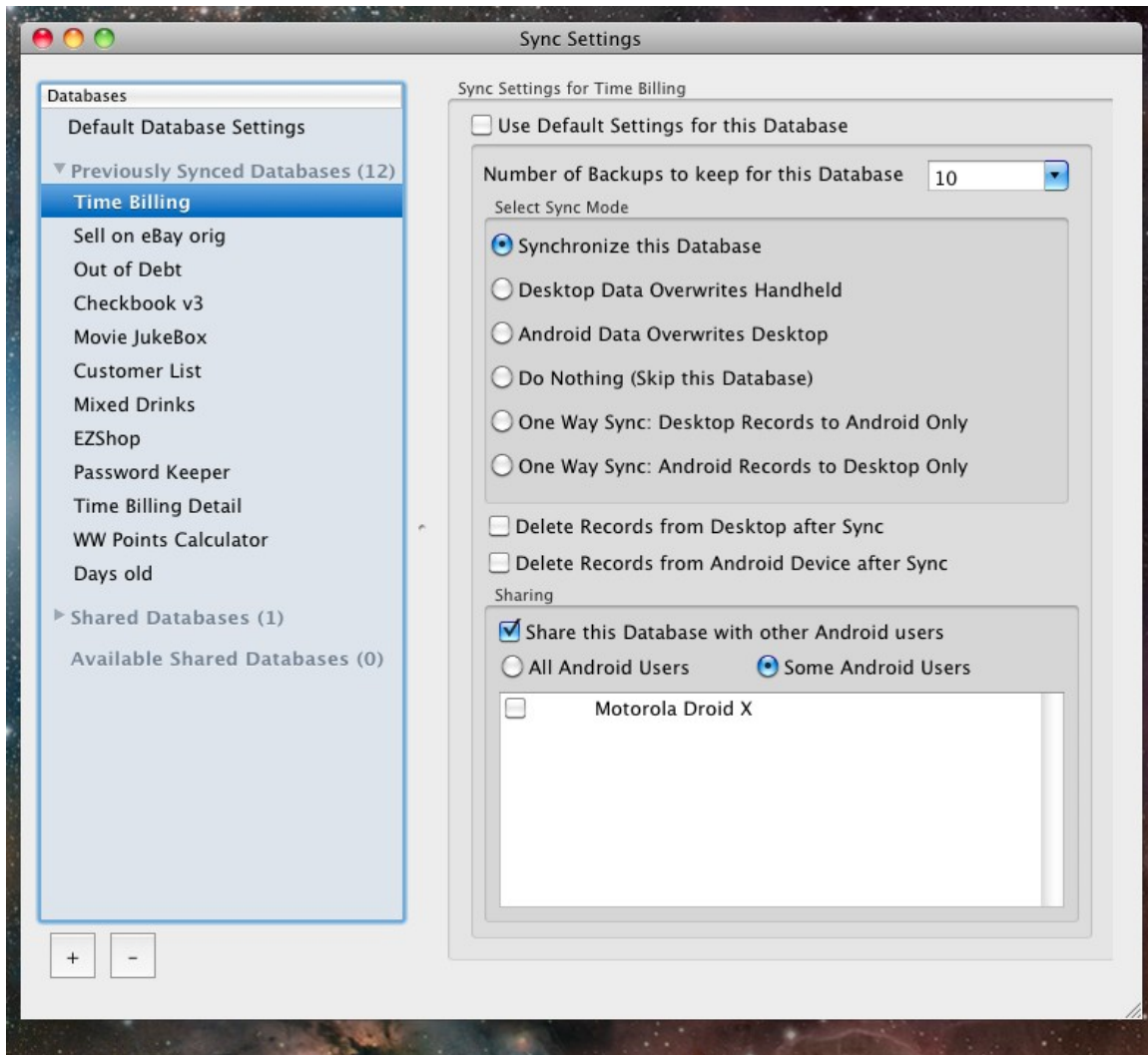
are stored in the Backup folder under the installation path for the Android conduit. The default path for this is ~/Documents/Handbase and in this folder are one or more folders with the user names of the partnerships created. Within each partnership folder there is a sub-folder called Backup. By default HanDBase will keep the last 10 syncs worth of backups for each database, but you can override that with this setting.

Select Sync Mode – this selection chooses how the database will be synced. The default mode is 'Synchronize this database'. This means that changes made on the desktop and the Android phone both will be synced together with new and updated records reflected on both desktop and smartphone. Other options include 'Desktop Data overwrites Android' which means that the database on the desktop will always overwrite the one on the Device (useful for published lists, etc), and 'Android Data Overwrites Desktop'. There is also an option to 'Do Nothing' or skip a database. This is useful if the database you have doesn't need to be backed up on the sync each time. The option 'One Way Sync: Desktop records to Android only' will do a true synchronization but only the Android device will contain the results of this, and the option 'One Way Sync: Android records to Desktop only' behaves just the opposite.

Delete Records from Desktop after Sync – After syncing the data, Delete the records from the desktop.

Delete Records from Android Device after Sync – after syncing the data, Delete the records from the smartphone.

Last but not least, for databases other than the default database setting, a database can be shared with other Android users set up on this desktop computer. To do so, choose a database in the category: Previously Synced Databases. Your options screen will show something like this:



If you check the option, 'Share this database with other Android Users', You can choose to share with all users or just some Android users and check the boxes of those you wish to share with.

Databases that other users have selected to share will show up in either the category Shared Databases or Available Shared Databases. If the current user is subscribed to sync to a shared database, settings for it will reside in the former. Otherwise, the available databases to share with the current user will reside in the latter.

From the settings screen, you can also select a database that isn't already on the Device to be shared. To do so, select the option '+' at the bottom. You will be asked for the path of a HandBase database that you wish to share. Browse to the database and click Open:

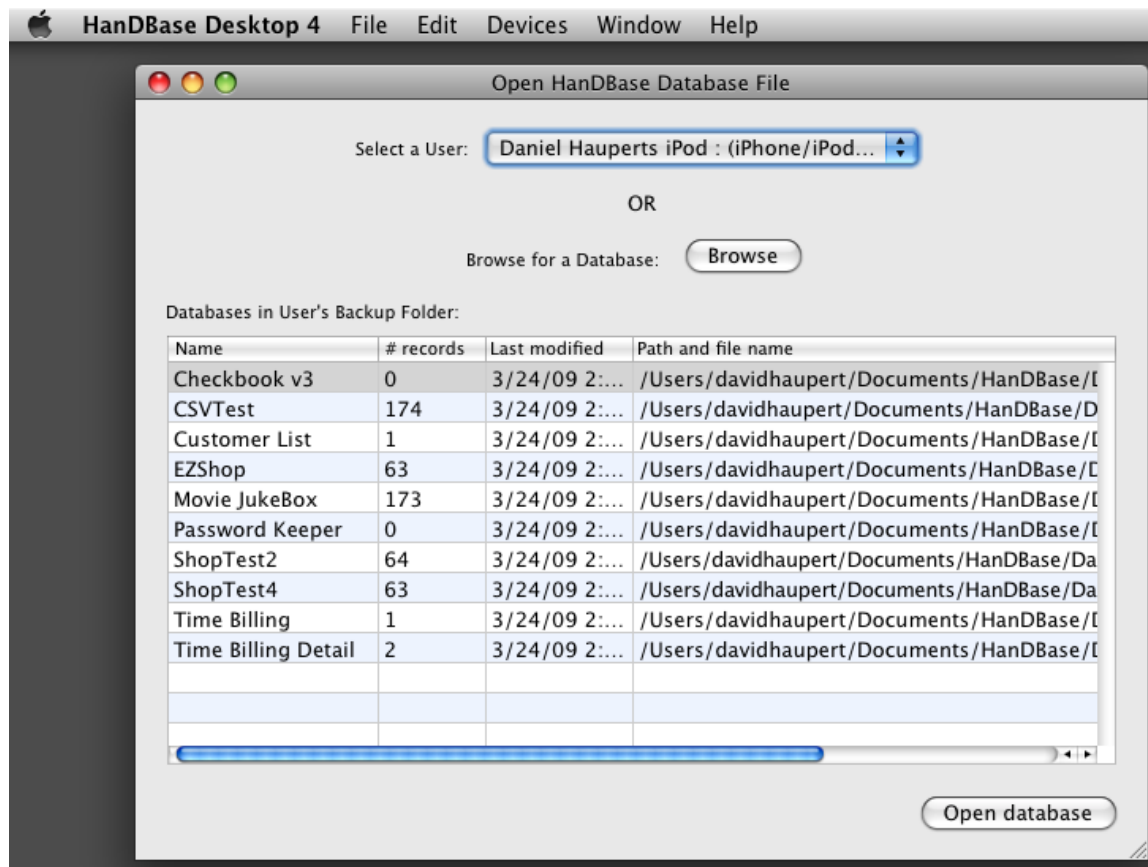
From here, you can configure the sync settings for this shared database just like any other.

Finally, if you wish to remove the sync settings for any particular database, you can select that database and then click the '-' button at the bottom. This will remove the settings, but not the databases stored. At this point, the database would be treated with the default settings on the next sync.

## **Using the HandBase Desktop**

Using the HandBase desktop, you can create, view, and edit your databases. The scope of this is not covered in this quick start guide but is detailed in the HandBase Desktop manual. Here are a few quick pointers for using with your Android device.

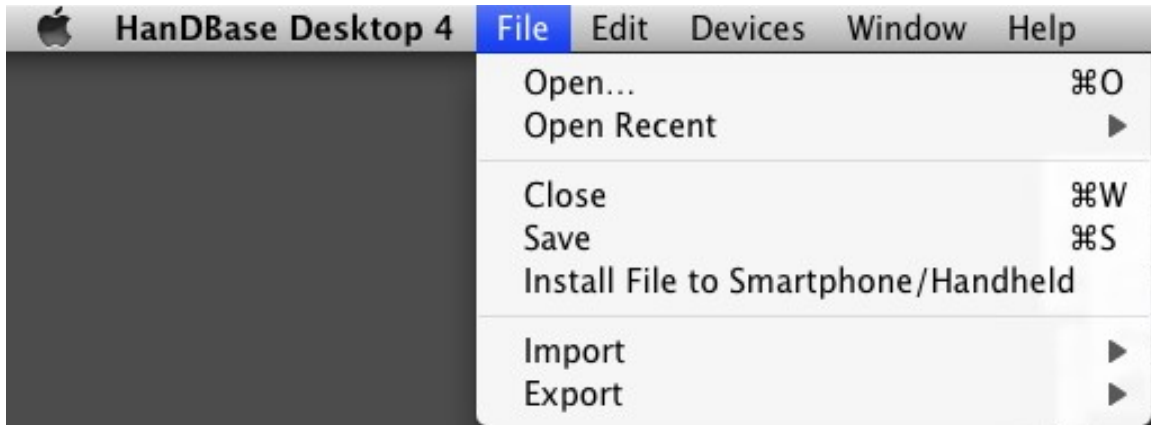
## Opening a Database File



To open a database file, choose File Open. You can select by User (showing not just Android users, but those on other HanDBase handheld platforms as well, such as iPhone, iPad and Palm OS) and see all the files synced for that user. Or you can select Browse and search anywhere on your computer for files.

## Using the HanDBase Desktop to install a database to your Android

To install a database to your device(s), simply open it up in the HanDBase Desktop and choose File, Install to Handheld/Smartphone:



You will be prompted with a list of users available to install to. Select the user and press OK to queue this file to install to your device(s). The next time you synchronize, this file will be installed to your Android phone.



## Where Do I Find Out More?

All of the HandBase Documentation is available online at:



<http://www.ddhsoftware.com/knowledgebase.html?read=95>

This manual is in PDF (Adobe Reader) format and contains instructions for many of the components available in the HanDBase product catalog. This includes the Android application, which is not a part of the documentation here, and the other handheld (iPhone, iPad, BlackBerry, Palm OS, Windows Mobile, etc) applications. By consulting this, it's easy to learn the in's and out's of the various field types, as well as see the information in this user guide discussed in more detail.

In addition, the DDH Software support site contains different tutorials: step-by-step instructions guiding you to create some simple, yet useful databases. You will also find tips and tricks and answers to frequently asked questions (FAQs) on the web site:

<http://www.ddhsoftware.com/support>