

# HandBase

## HandBase for Series 60 User Guide



Revision Date 11/17/2006

HandBase® is a Registered Trademark of DDH Software, Inc.  
All information contained in this manual and all software applications mentioned in this manual  
are Copyright 1997-2006 DDH Software, Inc.

# Introduction

## What is HanDBase?

HanDBase is a mobile relational database application for handheld PDAs and Smartphones. The functionality of the application differs depending on the platform, but on all platforms it enables you to view and edit databases on your mobile device while you are on the go. You can also use the desktop

components to convert data from another format into HanDBase so you can bring your existing data with you.

HanDBase databases are often called applets, as they are more than just simple documents. In combination with the HanDBase application, many database designs create or replace fully functional programs.

## How Do I Contact DDH Software?

If you need to contact DDH Software, here's how:

### Web Page:

<http://www.ddhsoftware.com/>

### Email:

*Sales:* [sales@ddhsoftware.com](mailto:sales@ddhsoftware.com)

*Support:* [support@ddhsoftware.com](mailto:support@ddhsoftware.com)

### Mailing Address:

DDH Software, Inc  
13833 Wellington Trace, E4-425  
Wellington, FL. 33414  
USA

### Phone:

Our staff is available to help you via phone Monday through Friday, 9am until 5pm Eastern Standard Time.

#### *Sales:*

1-877-DDH-4608 (Toll Free in US)

or +1 (561) 459-4659

#### *Support:*

+1 (561) 459-4659 option 5

## System Requirements

### Mobile Phone

Series 60 device running the Symbian OS 6.1, 7.0, 8.1 or 9.1(3<sup>rd</sup> edition)

(See: <http://www.symbian.com/phones> for a list of Symbian phones- only those that run the Series 60 User Interface are compatible with this version of HanDBase)

300 KB of available memory for the HanDBase application

### Windows Desktop

4 MB of available hard drive space

64 MB of RAM is recommended  
Windows 95, 98, 98 SE, ME, NT 4.51, 2000, XP, or XP Media Center Edition

## Program Specifications

Maximum Number of Databases: 200 (depending on memory limitations)  
Maximum Number of Categories: 20  
Maximum number of characters in a Database name: 19  
Maximum Number of Fields per database: 100  
Maximum Number of Records per database: 65000  
Maximum size of a Text or DB Popup field: 254  
Minimum number in an Integer field: - (negative) 2147483647  
Maximum number in an Integer field: 2147483647  
Minimum number in a Float field  
(depending on number of decimal places set by user): - (negative) 2147483647.9999  
Maximum number in a Float field  
(depending on number of decimal places set by user): 2147483647.9999  
Minimum Date possible in a Date field: 1/2/1904  
Maximum Date possible in a Date field: 12/31/2031  
Maximum size of a note field: 2000 characters  
Maximum number of Popup Items per field: 60  
Maximum number of characters in a Popup Item description: 80  
Maximum number of levels deep links can follow: 4 Databases  
Maximum number of DB popups in a group: 10  
Maximum number of Filters: 6

## Getting Started

### Mobile Phone

First, make sure you have the appropriate space available on your mobile device. The space required for the program itself is approximately 300KB. The databases you install or create will take up additional space as well. If you do not have at least the appropriate amount free, you will either have to choose to delete apps, or choose to not install this program until you have that amount of free memory.

If your Mobile Phone has a memory card it is also possible to install the application to your memory card, as well as store your databases on the memory card.

### Windows

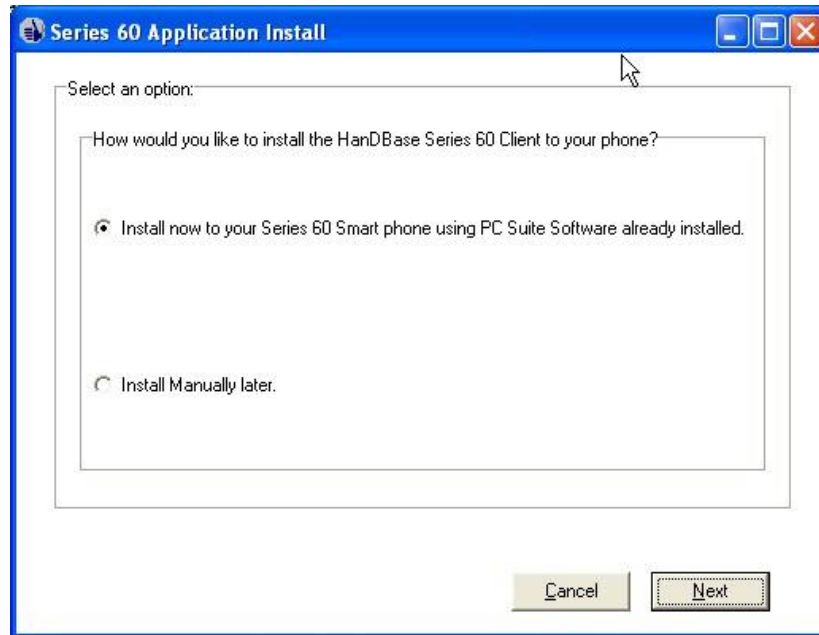
The HanDBase application will be automatically installed when you run the desktop installation program that you download from the DDH Software website or that you have been provided on a CD.

## Installation

### Windows Desktop Installation Wizard Steps:

When running the Windows installer, you're prompted to install the desktop application to your desktop PC, and then to install the mobile application to your smart phone.

The Series 60 Installer lets you choose whether you want to install immediately, using the PC Phone Suite installed on your computer, or to install at a later time, usually by sending or copying the file to your mobile device.



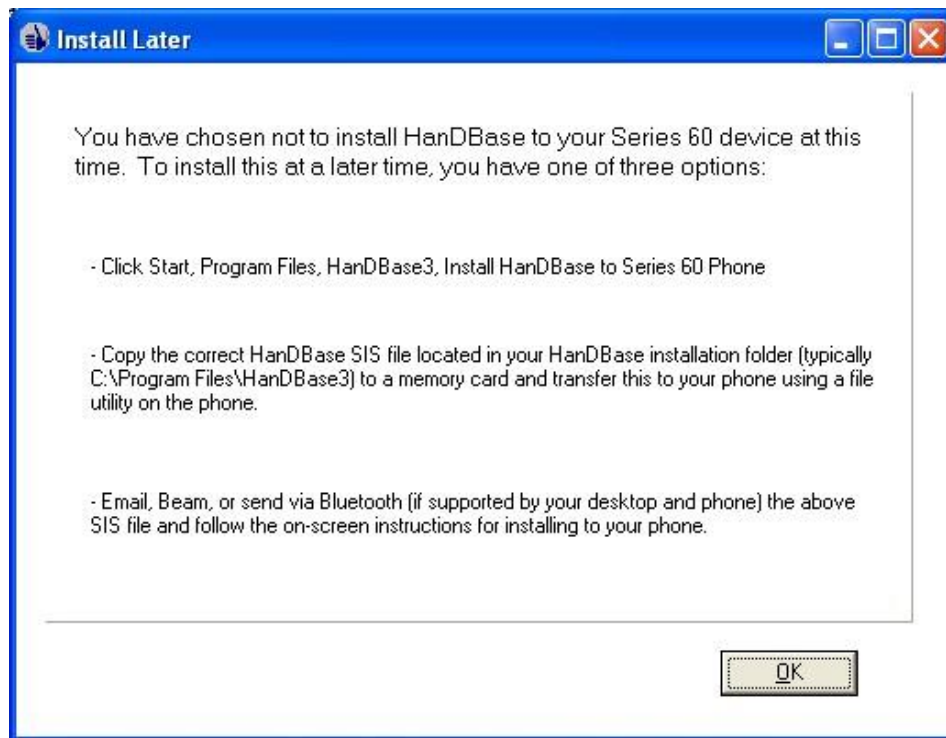
If you choose to Install Now you will see a screen that lets you select which model phone you have, based on the version of the Symbian OS you have installed. Choose the appropriate option for your device, whether it has Symbian OS 6.1, 7.0, 8.1 or the new 9.1 for S60 third edition phones. We recommend you connect your phone to your computer before continuing and clicking Next. This will ensure that the file is installed to your phone.



After you select the appropriate device the install file will be queued for installation. If your phone is connected you will see the standard Symbian Installation window which will walk you through the rest of the installation process.



If you do not have the PC Phone Suite you will need to choose the Install Manually Later option from the install wizard. Using this option you can manually install the file to your mobile device. This is most easily accomplished by either beaming the file via Infrared, if your computer has that capability, or sending it via Bluetooth, if you have that capability on your computer. You could also email it to yourself on the mobile device if you are able to receive email with attachments there. Alternatively you can copy it to a memory card, if your device supports adding a memory card, then when you put the memory card into the device you can launch the install from there.



Depending on how the SIS file gets to your phone, it will either be launched automatically, or require you to launch it. If you send the file via Infrared, Bluetooth or Email it is generally launched automatically when you open the received message on your device. If you copy it to a memory card, you'll need to use the file explorer application installed to your Series 60 phone (if one was not included on your phone, you can find one of several free file explorer style programs available on the Internet).

## Install Steps for Series 60 devices with Symbian OS 6.1, 7.0 or 8.1

Once it's launched, user's with Series60(S60) devices with the 6.1, 7.0 or 8.1 OS will see a series of screens like the following ones. Select Yes or OK where applicable.



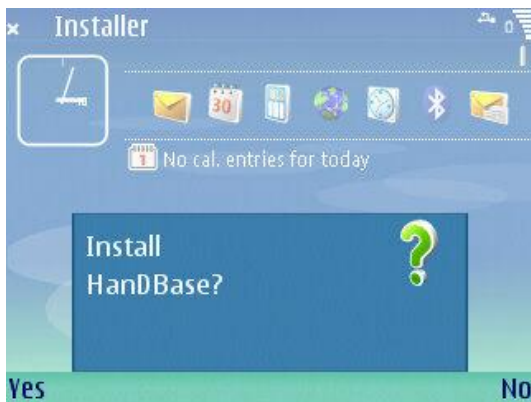
You can choose whether to install this to your phone's internal memory or the memory card based on your own preference.



## Install Steps for S60 3rd Edition devices with Symbian 9.1

If you have a S60 device with Symbian OS 9.1, 3<sup>rd</sup> Edition, there are some additional steps you need to take to install the application. This is due to the application not currently being Symbian Signed. During the Public Beta the application is not signed. Once we are ready to release the application it will be signed. At this time though, you will need to follow the steps below to enable installation. You will then see a series of screens like the following. Select Yes, OK or Continue where applicable.

1. Make sure that the date on your phone is set to the correct date.
2. Go to the Tools folder on the phone and open App Manager. Use Options, and then select Settings from the Options menu. Select "All" for the "Software Installation" option.
3. Go to the Tools folder on the phone and open App Manager. Use Options, and then select Settings from the Options menu. Select "Off" for the "Online certif. check" option.



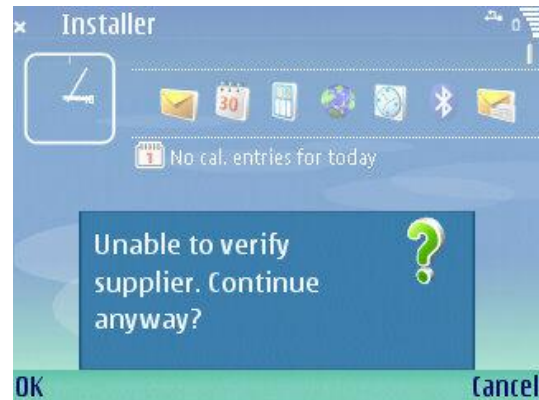
Yes No  
"Install HanDBase?"  
**Answer Yes.**



Continue Cancel  
"Security warning:  
Application is untrusted and may  
be harmful to your phone."  
**Select Continue.**



Continue Cancel  
"Details:  
Name: HanDBase  
Version:  
3.49"  
**Select Continue.**



OK Cancel  
Depending on the settings on your  
phone, you may see this message:  
"Unable to verify supplier. Continue anyway?"  
**Select OK.**

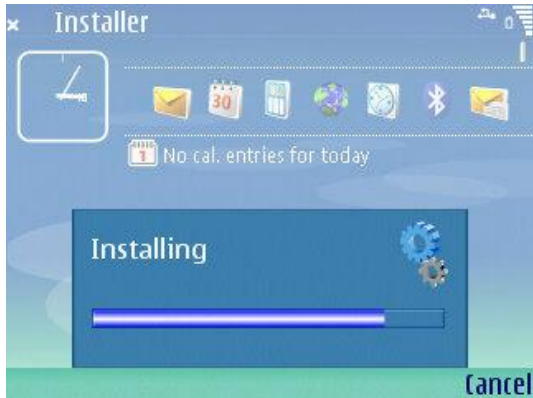




"Application Access  
 Allow application to:  
 - Use connectivity applications  
 - Read user data  
 - Write user data  
 - Use Camera or microphone"  
**Select Continue.**



"HanDBase  
 HanDBase offers the largest list  
 of FREE databases in the world  
 - over 2,000 titles to select from!"  
**Select Continue.**



You are now Done installing. You'll see the above screen which shows the install progress.

### Troubleshooting S60 3rd Edition Installs:

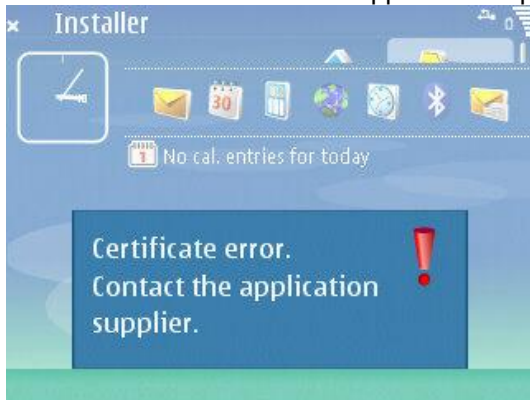
Q. You receive this message during the installation:  
 "Certificate may not yet be valid, is expired or phone's date setting may not be correct"



A. Make sure that the date on your phone is set to the correct date.

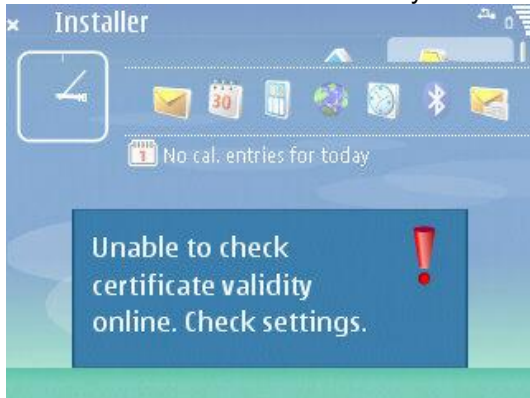


Q. You receive this message during the installation:  
"Certificate error: contact the application supplier."



A. Go to the Tools folder on the phone and open App Manager.  
Use Options, and then select Settings from the Options menu.  
Select "All" for the "Software Installation" option.

Q. You receive this message during the installation:  
"Unable to check certificate validity online. Check settings."



A. Go to the Tools folder on the phone and open App Manager.  
Use Options, and then select Settings from the Options menu.  
Select "Off" for the "Online certif. check" option.

If you have a problem with the installation you can attempt to re-install just the phone application from your desktop by selecting the "Re-install HandBase to Series 60 Phone" option from the HandBase 3.0 folder on your Start Menu under Programs/All Programs.

## Finding Databases to Install on your Handheld.

There are hundreds of thousands of HanDBase users who have been creating databases for use with the program since 1998 when it was first introduced. Most have designed databases for their own personal or business use, but many have made their creations available online. DDH Software keeps a repository of database applet designs on their website, divided by category, with thousands of useful databases uploaded by users like yourself. This section is called the HanDBase Gallery and is available to browse and download at:

<http://www.ddhsoftware.com/gallery>

## Designing Databases using your Desktop PC

You can create your own databases using the HanDBase Desktop companion program. These databases can make use of many different field types and combine multiple database tables for powerful relational features. For instructions on doing this, please consult the section below 'Where do I find out more?'

## Installing Databases for Use on Your Smart Phone

There are several ways to get databases into your phone for use with HanDBase:

1. Download databases on the internet directly via the web browser into your phone.
2. Download the databases from the internet to your desktop and transfer them to your phone
  - a. Through the IR port of your laptop or desktop PC.
  - b. Through the Bluetooth connection of your laptop or desktop PC
  - c. Through email- send the databases from your PC to your phone via email.
  - d. Through an external memory card. You can copy them to the memory card via your PC and then open them directly on the phone. If you place them in the folder **E:\Nokia\HanDBase3** (6.1, 7.0 and 8.1 devices) or **E:\Data\HanDBase3** (9.1 3<sup>rd</sup> edition devices) on the memory card, HanDBase will let you open them directly from the memory card on your phone. Or you can copy them to the phone's memory to the **C:\Nokia\HanDBase3** (6.1, 7.0 and 8.1 devices) or **C:\Data\HanDBase3** (9.1 3<sup>rd</sup> edition devices) folder.
3. Create the databases yourself using the HanDBase Desktop program and transfer them to your phone using the same methods as #2 above.

For more information on any of these transfer methods, please consult the manual of your phone and/or computer.

## Starting the HanDBase program

In order to use your registered version of HanDBase you will need to enter your 16-digit License Key.

If you purchased this software online or directly from DDH Software then this License Key is found by logging into the DDH Software website using the email address you registered with and the password you were provided when you registered. If you are not sure of your password to log in to our site, you can have the password sent to you through email from a link at:

<http://www.ddhsoftware.com/lostpass.html>

If you purchased this software in a retail outlet then this License Key is printed on the insert to the package for the software.

Be sure to use the correct code for your mobile device and desktop platforms. You will also want to follow the instructions for registering the software so that you can download future updates and receive Technical Support. If you are a Windows user you will also be prompted to enter your License Key during the installation process. Once entered you will be able to use the Windows Desktop components you are registered for.

To start the HanDBase application on your mobile phone, go to the Menu or list of applications on your phone and scroll until you see/highlight the HanDBase icon. Once highlighted, use the phone's navigator to select it by pressing the center button.

When you first run the program you may be prompted to enter the License Key. When entering the License Key, use the phone's dial pad and do not try entering any spaces or dashes.

## Choosing a Database



To open an existing database, simply select it from the list using your phone's navigator buttons and select with the center button. HanDBase will remember where you left off when last viewing or editing the database, and your sorting and filtering settings will be restored. If you don't see the database you want in the current list, it may reside under a different category.

You can change the category by selecting the Options soft key and selecting the category option.



The categories are defined when creating the database, and your phone will automatically build a list of categories based on the databases installed to your phone. Simply select the category that best defines the database you are looking for, or choose the All option to show all databases in every category.



## Navigating the List of Records

From Unit	To Unit	Factor
acre	sq. chain (10	10
acre	sq. rods	16
acre	sq. links (610	610
acre	hectare or 0.	0.4
acres	sq. feet	43
acres	sq. meters	40

Options ▾ Back

The List View Screen contains a scrollable list view of all of the records for the current database. You can use the directional buttons on your phone to scroll in any of the four directions as

applicable. Scrolling right and left will show the various fields for each record and scrolling up and down will go through the various records in the database. The top right corner of the screen shows the view currently selected.

## Adjusting the scope of records shown in the List View

It's often much more useful to only see a subset of the information in the table or to see it sorted a certain way. You can control the records shown in this list view by using one or more of the following options:

### Sorting

To Sort the records in your database press the (Options) button. From the menu select [Tools] and then select [Sorting]. You will see the screen pictured below.



The Sorting lets you choose up to three fields to sort on. There can be a primary, secondary, and tertiary sort field, and each can be sorted in ascending (forward), and descending (reverse) order. Certain field types are not sortable as they do not contain any sortable data: The Link Field, Heading Field, Image Field, and the External Field types cannot be sorted. Once your sorting parameters are set, press the (OK) button to save your changes. Press (Back) to ignore the changes. Both buttons will return to the List View Screen once pressed.

### Filtering

To Filter the records in your database press the (Options) button. From the menu select [Tools] and then select [Filter]. You will see the screen pictured below.



This screen is used to set the filtering parameters for the database. There can be up to six filtered fields. To enable a filter, select Enabled for that filter. This will enable choices for **Field** and the filter parameters. The filter parameters depend on what field type is being filtered. Some fields can't be filtered at all. The following list outlines what the ranges for each field type do:

*Text, Note, DB Popups, Conditional, Relationship, and Linked fields*

There is one filter parameter, which is labeled Contains. In the field, enter the text that must be present in this Text Field in order to be shown in the List View Screen.

*Integer, Float, Date, Time, and Calculated fields*

There are two filter parameters, the low range and the high range of the field. In each field enter the minimum and maximum value, respectively, for which this field's value must fall in order to be shown in the Main Screen.

*Popup Fields*

There is one filter parameter: the value of the popup. In order to be shown in the List View Screen, a record must have the value you select in the filter in that particular Popup field.

*CheckBox Fields*

There is one filter parameter: the value of the checkbox. In order to be shown in the List View Screen, a record must have the same value as this checkbox, in this field.

*Image,Heading, Link, and External Fields*

Cannot be filtered.

Filter Mode

There is also a mode choice for each filter. This lets you select 'Normal' or 'Not/Negate'. If you select 'Not/Negate' as the filter mode, this means that the filter will look for records that do not meet that criteria.

Example:

If you want to find all records that do *not* have "Dr." in a text field called "Name", you would create a filter for the field "Name", with "Dr." for 'Contains' and with 'Not/Negate' selected for Mode. This will show all records that do not have "Dr." in that field.

## Two or more Filters

If additional filters are enabled, an operation choice will show and you can select AND or OR option. Select AND to indicate that a record must meet both Filter requirements for it to be shown. Select the OR option to indicate that a record must meet one filter or the other in order to be shown/included in the list view.

Examples:

You have a database with a Date field (called "date") and a Time field (called "time"). You have 10 records in the database. 5 of the records have a date of June 1, 2005 and 5 of the records have a date of June 8, 2005 in the "date" field. The times in the "time" field are all different.

If you want to see all records that have a value of June 1, 2005 in the "date" field, use this filter:

Filter 1: enabled  
Mode: Normal  
Field: date  
Low: 06/01/2005  
High: 06/01/2005

If you want to see all records that have a value of June 1, 2005 in the "date" field, but only those that have a time in the "time" field between 12:00:00 am and 12:59:59 am, use this filter:

Filter 1: enabled  
Mode: Normal  
Field: date  
Low: 06/01/2005  
High: 06/01/2005

AND

Filter 2: enabled  
Mode: Normal  
Field: time  
Low: 12:00:00 am  
High: 12:59:59 am

If you want to see all records that have a value of June 1, 2005 in the "date" field OR a time in the "time" field between 12:00:00 am and 12:59:59 am, use this filter:

Filter 1: enabled  
Mode: Normal  
Field: date  
Low: 06/01/2005  
High: 06/01/2005

OR

Filter 2: enabled  
Mode: Normal  
Field: time  
Low: 12:00:00 am  
High: 12:59:59 am



### **Grouping Filters with Parentheses**

You can also use parentheses, [ ( ] and [ ) ], to group your filters . You can use these to evaluate fields together or separate from each other. You can even evaluate multiple groups of filters.

Example:

You have a database with a Text field called “text”, a Date field called “date” and a Checkbox field called “checkbox”.

If you want to show all records that have the words “Show me” in the “text” field or that have both June 1, 2005 in the “date” field and have the field “checkbox” field checked, you would use this filter:

```
(  
Filter 1: enabled  
Mode: Normal  
Field: date  
Low: 06/01/2005  
High: 06/01/2005
```

AND

```
Filter 2: enabled  
Mode: Normal  
Field: checkbox  
Must be: checked  
)
```

OR

```
Filter 3: enabled  
Mode: Normal  
Field: text  
Must contain: Show me
```

This filter will look for all records that have “Show me” in the “text” field. Those records will be included in the list view when the filter is active. Then, in the rest of the records (the records that do not have “Show me” in the “text” field), the filter will look for records that have June 1, 2005 in “date” and that have the field “checkbox” checked.

### **Saving and Disabling Filters**

Once your filters are set, press the ( Options, OK ) button to save your changes. Press ( Back ) to ignore the changes, and press ( Options, Disable ) to un-check All the Filter Enabled options, as a quick way to disable all filters, and return to the List View Screen.

### **Find**

To Search for records in your database press the (Options) button. From the menu select [Find]. You will see the screen pictured below.



This screen is used for searching for a specific value in the database. You can specify a string to search for, whether to search all or one field, whether the search will be case sensitive or not, and whether the field(s) being searched must start with this value to be matched. Press the (OK) button to begin the search, press (Back) to return to the List View Screen.

If you want to search for the same value again press the (Options) button. From the menu select [Find Again].

## Views

HandBase Views allow you to set up pre-defined Sorting, Filtering and Field Display options in the List View and Record View of your database. These views can be named and called up easily by selecting the active view from the List View.

- **Selecting a View**  
To select a predefined View of your database press the (Options) button.



From the menu select [Views]. You will see a screen similar to the one pictured below.



Once you have selected a View the List View of your database will automatically be adjusted to display the records as you have defined.



- **Editing Views**

To Create a new pre-defined View of your database press the (Options) button. From the menu select [Views] and then select [Edit...]. Press the (Options) button again and from this menu select [New].

To Edit an existing pre-defined View of your database press the (Options) button. From the menu select [Views] and then select [Edit...]. Use the directional pad on your mobile phone to select the View you wish to edit. Press the (Options) button again and from this menu select [Edit].

To Delete an existing pre-defined View of your database press the (Options) button. From the menu select [Views] and then select [Edit...]. Use the directional pad on your mobile phone to select the View you wish to delete. Press the (Options) button again and from this menu select [Delete].

To Copy an existing pre-defined View of your database, so you can use the existing settings as a basis for a new view, press the (Options) button. From the menu select [Views] and then select [Edit...]. Use the directional pad on your mobile phone to select the View you wish to copy. Press the (Options) button again and from this menu select [Copy].



When you select New, Edit or Copy you will see a screen similar to the one pictured below.



This screen enables you to set the specific options for this View you are creating or editing. There are two different Actions that can be performed when this view is selected from the from the Views menu in the List View Screen, *Adjust view of database* and *Switch to other database*. Following are the different options on this screen and what functions they perform.

**Name:**

Enter the name you would like to give to this View here.

**Action:**

**Adjust view of Database**

If you select this action then when this view is selected the way the database is displayed will change. These changes can be by Filtering, Sorting or even displaying or not displaying certain fields in the List View or Edit Record view.

**Switch to other Database**

If you select this action then when this view is selected you will be taken to the other database, specified in this view's properties.

**To Database:**

Select this field to choose from a list of your databases the one you would like to switch to when this View is selected.

### *Live Update settings when active*

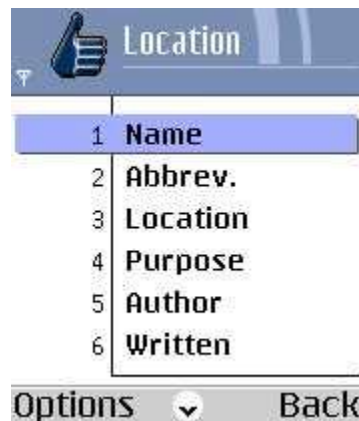
If you check this option then any changes you make to the Field View Properties, Sorting, or Filtering screens, while you have this view, will be applied back to this view. This can be useful if you need to frequently change filters and want them to stick.

Once you have set these basic options you can begin setting up the actual view. To do this press the (Options) button. From the menu select one of the options: [Fields], [Sort] or [Filter]. You can also select [Cancel] if you do not want to edit these options at this time.



### *Fields*

When this button is selected you will see the screen below. There are various options you can set or change so this View displays the data the way you want it to. Following is a list of the available options on this screen.



### **Fields List**

This box lists the fields in your database. You will use this list to select the field you would like to modify.

#### **Move Up**

To move the field up in the list, making it appear closer to the beginning of the database in the views, highlight the field you wish to move up and then press the (Options) button and press [Move Up].

#### **Move Down**

To move the field down in the list, making it appear closer to the end of the database in the views, highlight the field you wish to move down and then press the (Options) button and press [Move Down].

### Field Options

To edit specific field options, highlight the field you wish to modify and press the directional pad button on your mobile phone. You will see a screen like the one below.



#### *Width*

Enter the number of pixels wide you would like the selected field to be in the List View.

#### *List Visibility*

Select Yes if you want the selected field to be visible in the List View of the database.

#### *Edit Visibility*

Select Yes if you want the selected field to be visible in the Edit Record screen of this database.

#### *Export/Print*

Select Yes if you want to selected field to be exported or printed, if you perform one of those functions, when this is the selected view.

#### *Sort*

When this button is selected you will see the standard HanDBase Sort Screen. For details on setting Sort options go to the Sort Database Screen section.

#### *Filter*

When this button is selected you will see the standard HanDBase Filter Screen. For details on setting Filter options go to the Edit Filters Screen.

## Editing a Record



To edit a record, simply select it from the List View by scrolling to it and selecting the center of your phone's navigator buttons. You will be shown the Edit Record screen where each field's value can be seen and edited. Scrolling up and down scrolls through the fields in that record, and selecting a record with the navigator's center button lets you modify that value. Depending on the field type different behavior can be expected.

Fields like Text, Float, Integer allow text entry via the keypad, but they also support popup lists which you can select from, add to, and edit. Most field types are self-explanatory in nature- checkboxes have checkboxes you can select to change the value of, date and time fields have date and time pickers.

Image/signature fields are limited to viewing only on the Series 60 phones due to the lack of touch screens on the devices.

Some fields like Link, Linked, DB Popups, and Relationship fields are tied to other databases. When you select them, you're taken to the other database for selecting a record or adding related records. More info can be found on these complex relational fields in the comprehensive manual.



The (Options) button gives you options to go to the Details screen, to make a copy of the existing record, to navigate to the previous or next record in the database (within the current filter range), or cancel the current editing and abort the changes to this record.

The Details screen shows you information about the record like the Date and Time created, modified, and gives you the ability to set an alarm for the current record (if manual alarms are enabled), encrypt a record (if manual encryption is enabled), and delete the current record.





## Advanced Options

### Encryption

HandBase supports field level encryption- this unique and incredibly useful type of encryption lets you encrypt only the fields that you want to be private. In this manner, you save time by viewing the non-private data without decrypting the private data, and only decrypting what is necessary. This feature is implemented in three very flexible ways selected by the database designer:

#### Automatic Encryption of Database:

In this mode, when you open an encrypted database, you are prompted for the decryption password.



Once you enter the password and select (OK) all fields marked for encryption are decrypted automatically, and you can view and edit the database as normal. When you close/save the database, you're then prompted to enter the encryption password, and while saving the marked fields will be encrypted on all records in the database.

#### Automatic Encryption on Record Close:

In this mode, an encrypted database is opened immediately without prompting for a password. If records are encrypted, the list view will show those fields with x's in place of the scrambled data.



Descriptio	User ID	Password
Bank Si	XXXXXX	XXXXXX

Options

Back

When an encrypted record is opened, you will be prompted for the password to decrypt the record. Once decrypted the values can be edited as normal, and on record close/save you're prompted to re-encrypt the record.

### Manual Record Encryption:

The Manual encryption mode does not ever prompt you when opening a database or record that is encrypted. However, you can choose when you want to encrypt a record and do so manually.

To do so we open a record, and select (Options) and then (Details).



Description
Bank Site Login
User ID
myname
Password
mypassword

Options

Back

From the details screen, select (Options) and choose (Encrypt). You're then prompted for the password to encrypt the record:



Details
Copy To New
Next Record
Prev Record
Encrypt
Cancel

Select

Cancel



Description
Bank Site Login
Enter Encryption Password
<input type="password"/>

Cancel

Once encrypted, HanDBase returns to the Edit Record screen and the encrypted fields are xxx'ed out. Returning to the List view shows a similar result.



To decrypt that record, from the Edit Record screen, go back to the Details screen and select Decrypt. Or you can simply select one of the encrypted fields, and you'll be prompted for the decryption password.

## Alarms

HanDBase lets you set a reminder to revisit a record at some point in the future. There are two modes for alarms, as chosen by the database designer:

- Automatic Alarms

The database designer selects date and time format fields within the database and based on the value of those fields, an alarm is set to remind you to look at that record information. The value from two fields is shown in the alarm dialog, chosen by the designer to be useful in identifying the record.

- Manual Alarms

Manual alarms, like manual encryption are set from within the Details screen. To set an alarm to remind you about a record, go from the Edit Record screen to the Details screen by selecting (Options) and then (Details). Scroll to the Alarm option and select 'Yes' as a value. You will see two choices On which lets you choose a date for the alarm and At which lets you select a time. When you exit the details screen and save your record, the alarm is set.



## Where Do I Find Out More?

The HanDBase Comprehensive Manual is available online at:

<http://www.ddhsoftware.com/knowledgebase.html?read=95>

This manual is in PDF (Adobe Reader) format and contains instructions for many of the components available in the HanDBase product catalog. This includes the desktop application and the other handheld (Palm OS and Pocket PC) applications. By consulting this, it's easy to learn the in's and out's of the various field types, as well as see the information in this user guide discussed in more detail.

In addition, the DDH Software support site contains different tutorials: step-by-step instructions guiding you to create some simple, yet useful databases. You will also find tips and tricks and answers to frequently asked questions (FAQs) on the web site:

<http://www.ddhsoftware.com/support>